

The Lady in Red



Eric and TLIR (The Lady in Red) on Kings, just above the Huddart Park entrance. This young woman has improved fantastically since the first time we came across her.



First sighting of the Lady in Red at the base of Kings. She's opposite the car you can see on the left, a tiny dot of red.



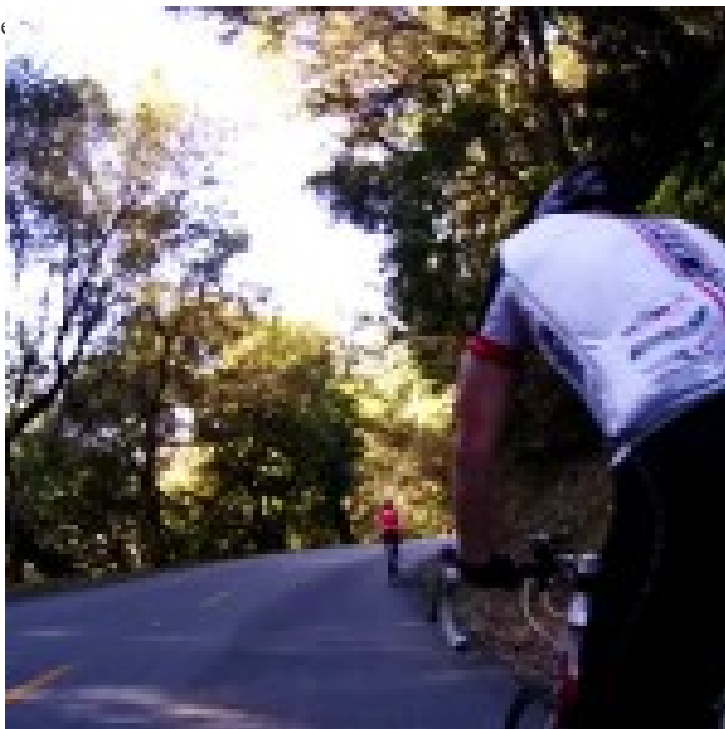
Meeting up with her at the Huddart Park entrance 10 minutes later.

Another warm day, lots of other cyclists out on the road, but not too many of "us." Just myself, Eric & Joe. It's Thursday which means we ride up through the park, and it was shortly before making the turn from Kings onto Greer that we first spotted the cyclist in red in the distance, heading up Kings the "normal" way. I couldn't get a read on the cyclist's speed but knew there was a chance we'd meet up at the upper park entrance, when we merged back onto Kings. It's a bit longer going up through the park (adds just over a minute) but I figured, even taking it easy as we planned to today, there was still a chance.

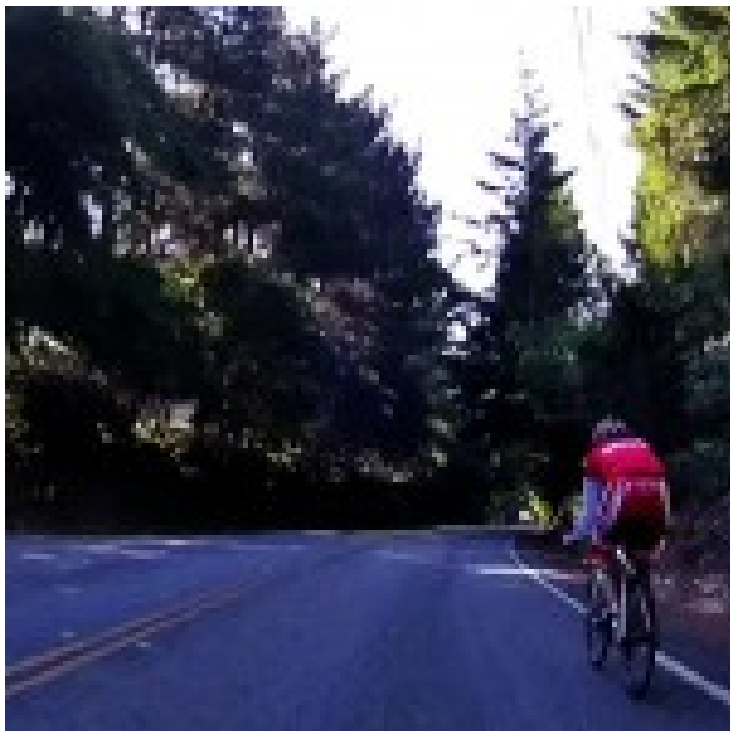
And there she was. Right on time, just as we made the right turn onto Kings. Only she didn't seem to be out of breath, even after immediately picking up speed to "our" pace. It wasn't too long after that that she started riding at "her" pace which was a bit faster than Eric or I were into this morning.



TLIR looking back as I let her know I'm dropping off the pace



Riding away from us as I send Joe in pursuit! Too bad, because I wanted to do the civil thing, tell her about our ride, let her know we'd be happy to have her and any others who enjoy climbing ride with us. But that's not so easily done when you're breathing heavily, so I assigned Joe to go after her. Besides, Joe doesn't breathe heavily, so less chance of mistaken intentions. But even Joe couldn't quite do the job; The Lady in Red arrived at the top maybe 20 meters ahead of him. When I heard that, I knew. This was the same young woman a week and a half ago that was pulling a much-larger version of our ride along Skyline at a pace she shelled me off the back.



Catching back up to her as we descend into Sky Londa The final confirmation that this was the same woman seen before came when I caught back up to her at the end of the descent... just like a week and a half ago. Don't think she likes descending, but she's rapidly

becoming a wicked climber.

And of course, this happens while Kevin's unable to ride (three weeks from today he gets his kidney stent removed and can start riding again!) and simply doesn't believe there are any women anywhere near his age out climbing the hills. --Mike--